



RTM-SMAT-18 I

37347A

MODEL:
DEVICE ID:

DATE: 10/02/2008 13:29
OPERATOR:

Page 1

START: 0.040000 GHz
STOP: 20.000000 GHz
STEP: 0.049900 GHz

GATE START: -
GATE STOP: -
GATE: -
WINDOW: -

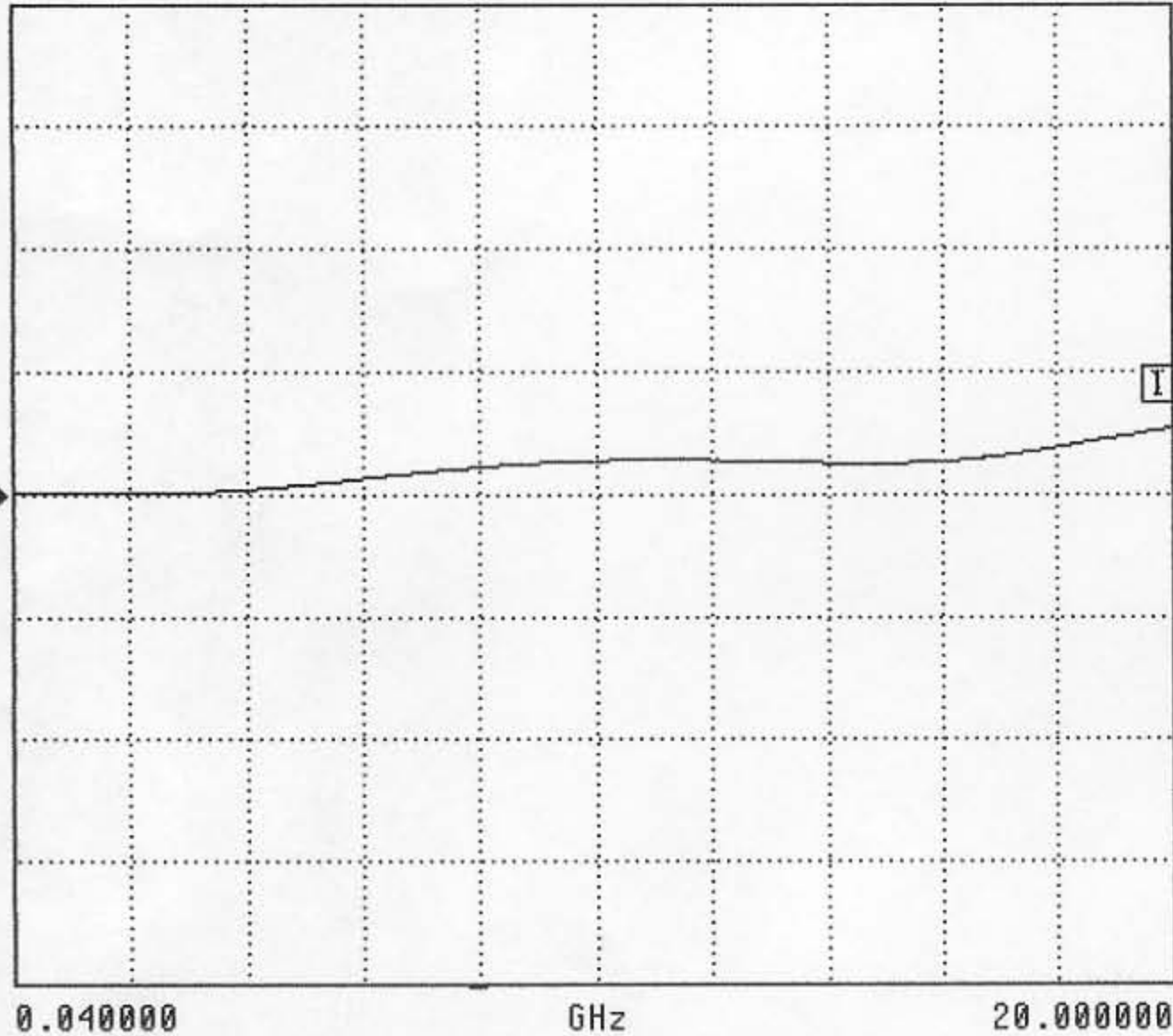
ERROR CORR: 1P 2P FWD
AVERAGING: 1 PT
IF BNDWDTH: 1 KHz

PARAMETER:
NORMALIZATION:
REFERENCE PLANE:
SMOOTHING:
DELAY APERTURE:

-----CH1-----
-S11-
OFF
0.0000 mm
0.0 PERCENT
-

S11 FORWARD REFLECTION

SWR REF=1.000 U 200.000 mU/DIV



CH 1 - S11
REFERENCE PLANE
0.0000 mm

MARKER 1
20.000000 GHz
1.106 U

▶ MARKER TO MAX
MARKER TO MIN

MARKER READOUT
FUNCTIONS

RF TEC Mfg, Inc.

5



RTM-SMAT-18 II

37347A

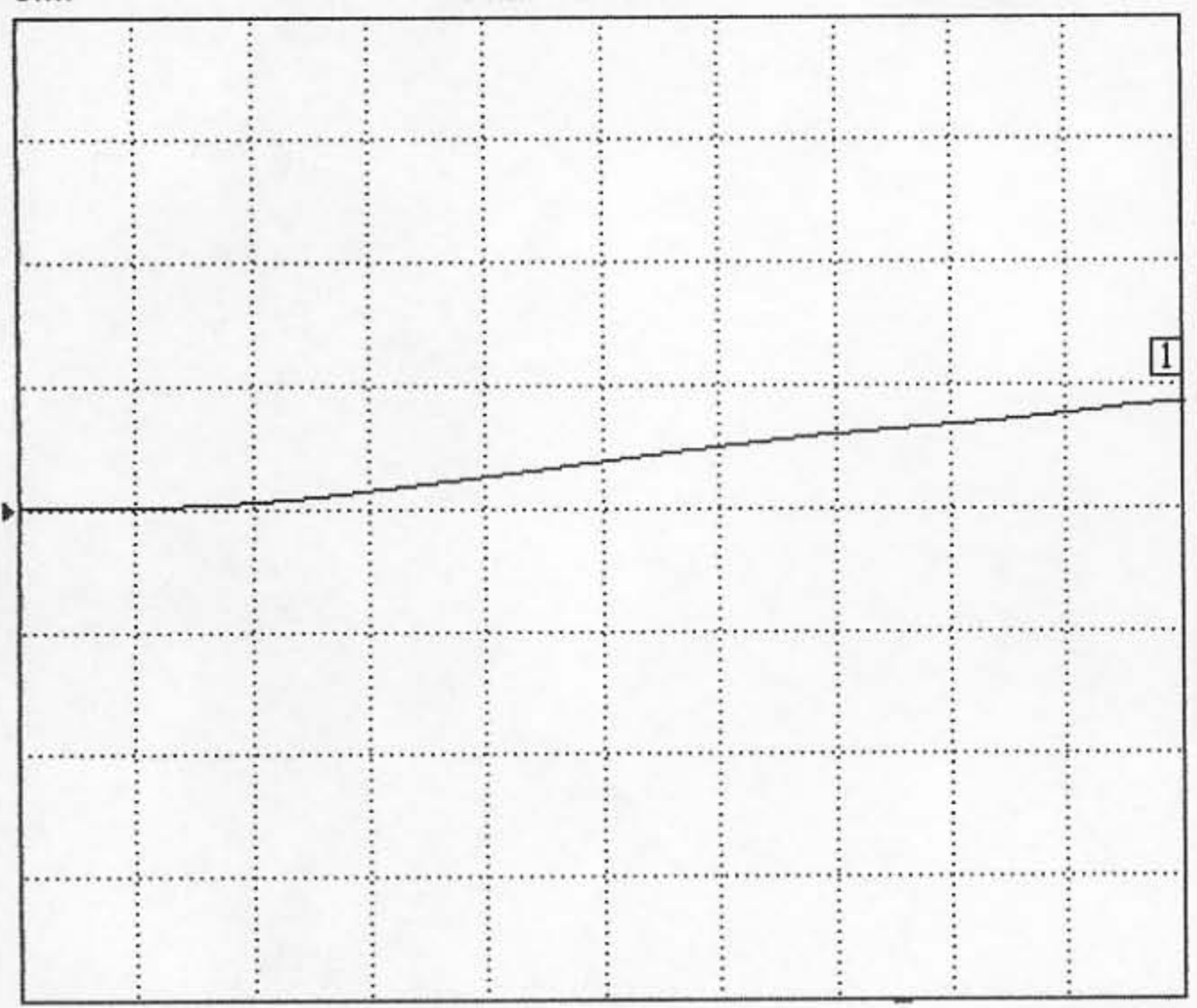
MODEL:	DATE:	10/02/2008	13:30	Page	1
DEVICE ID:	OPERATOR:				
START: 0.040000 GHz	GATE START:	-		ERROR CORR:	1P 2P FWD
STOP: 20.000000 GHz	GATE STOP:	-		AVERAGING:	1 PT
STEP: 0.049900 GHz	GATE:	-		IF BNDWIDTH:	1 KHz
	WINDOW:	-			

```

PARAMETER:          -----CH1-----
NORMALIZATION:      -S11-
REFERENCE PLANE:    0.0000 mm
SMOOTHING:          0.0 PERCENT
DELAY APERTURE:     -
  
```

S11 FORWARD REFLECTION

SWR REF=1.000 U 200.000 mU/DIV



CH 1 - S11
REFERENCE PLANE
0.0000 mm

MARKER 1
20.000000 GHz
1.171 U

▶ MARKER TO MAX
MARKER TO MIN

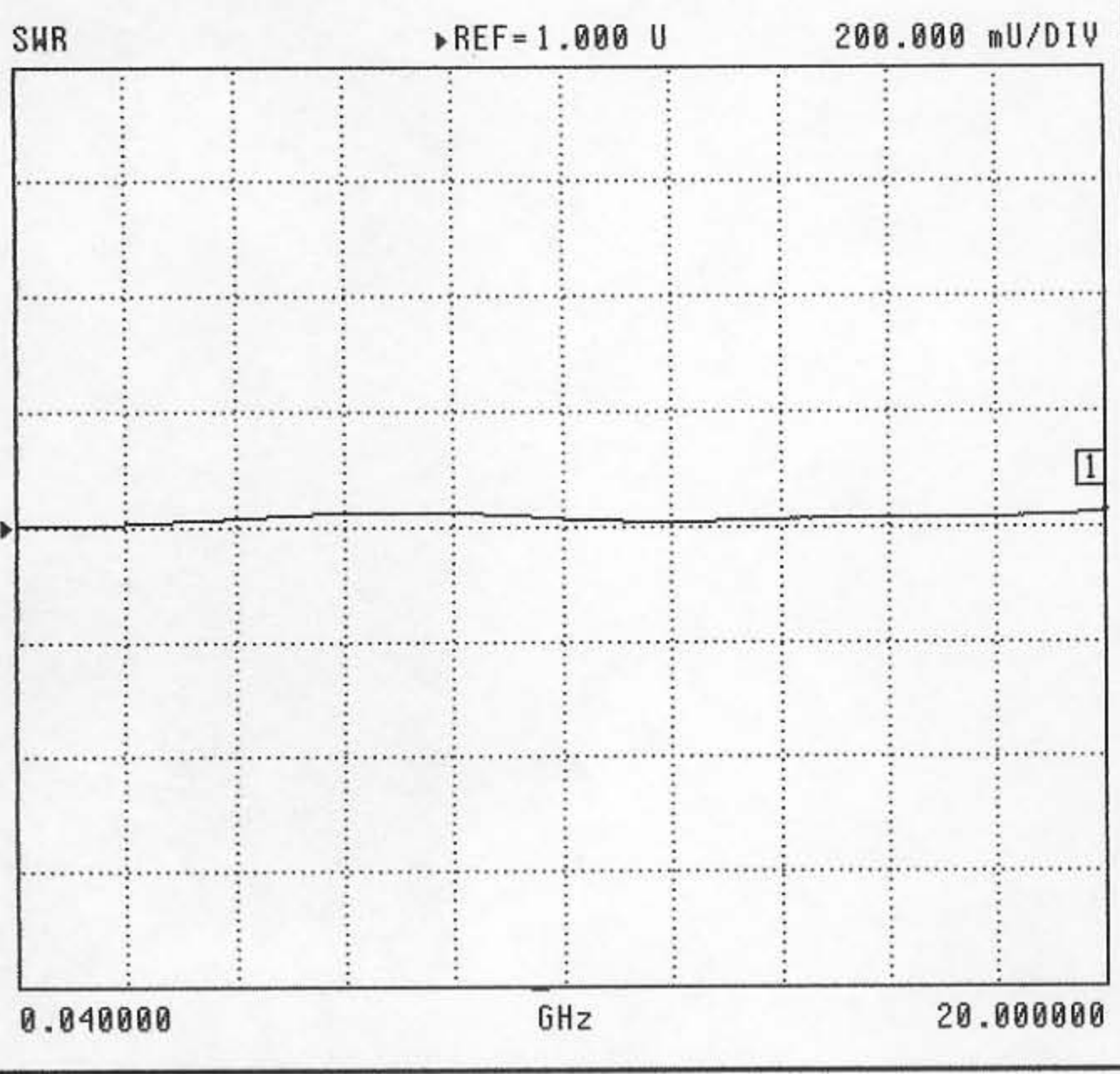
MARKER READOUT
FUNCTIONS

37347A

MODEL: DATE: 10/02/2008 13:30 Page 1
 DEVICE ID: OPERATOR:
 START: 0.040000 GHz GATE START: - ERROR CORR: 1P 2P FWD
 STOP: 20.000000 GHz GATE STOP: - AVERAGING: 1 PT
 STEP: 0.049900 GHz GATE: - IF BNDWDTH: 1 KHz
 WINDOW: -

PARAMETER: -CH1-
 NORMALIZATION: -S11-
 REFERENCE PLANE: 0.0000 mm
 SMOOTHING: 0.0 PERCENT
 DELAY APERTURE: -

S11 FORWARD REFLECTION



CH 1 - S11
 REFERENCE PLANE
 0.0000 mm

MARKER 1
 20.000000 GHz
 1.026 U

▶ MARKER TO MAX
 MARKER TO MIN

MARKER READOUT
 FUNCTIONS